



SCHMITT
MARINE

C
A
T
A
L
O
G



Quality, Innovation, Value

www.schmittongaromarine.com

Welcome to Schmitt Marine Products

Over 60 years ago, Schmitt launched the first stainless steel steering wheel at the 1962 New York City Boat Show. Years of quality and integrity have placed Schmitt at the forefront of marine product manufacturers. In 2008, Schmitt Marine acquired Ongaro Marine, a leader in stainless steel horns, windshield wiper systems, and other marine accessories. Today, Schmitt Marine continues to provide the highest quality marine products to boat builders all around the world. Even after more than half a century, our guiding principle remains the same: **to develop and manufacture innovative products with superior quality, to make boating and fishing more enjoyable for everyone.**

Customization

Schmitt Marine has been collaborating with OEM's and other customers on ideation, design, and fabrication of marine and industrial products. Our engineering team understands the special requirements and standards for your application. Schmitt Marine engineers will work closely with your team to tailor products to your specific design and styling needs to set it apart from the competition. To learn more about our process and how we can work together, contact us at 1-866-724-6488, or sales@schmittongaromarine.com to discuss turning your vision into reality.

Our Customer Service

Our company was founded on strong customer service principles and traditions. We maintain these traditions, providing our customers with the most innovative, highest quality marine products available today. Our dedication to our customers is demonstrated in the quality of our products, warranties, and experienced employees. Customer Service inquiries can be emailed to customerservice@schmittongaromarine.com or call (717) 431-0580.

Dedication to Quality

Schmitt Marine's attention to detail is second to none, and we design, develop, and test each of our products right here in the United States. We conform to strict standards of quality control—from the original raw material procurement until final packaging. Each product is thoroughly tested for strength, durability and dependability in the design and development stage. In addition, all products are sample tested in production runs.

Schmitt Marine's products are type-accepted by the National Marine Manufacturers Association and our products also carry the CE registration.

Warranty

To view our full warranty statement, visit our website http://schmittongaromarine.com/about/the_schmitt_difference.

COMING SOON



Carbon Fiber Primus

#7451321FGK • with control knob

#7451321FG • no control knob (shown)

Our Products

Stainless Steel Wheels

Primus	4
Powder Coated Primus	6
Customer Photos	7
Evo Pro	8
Evolution Elite	8
Evolution	9
Vision Elite/Vision FX	9
Destroyer	10
Orion	11
Sailboat	11
Yacht	11
Center Nuts & Center Caps	12
Customer Photos	13

Leather Wrapped Wheels

Torcello Elite	14
--------------------------	----

Polyurethane Wheels

Torcello 05 Series	15
Torcello 04 Series	15
Torcello 03 Series	16
Torcello Lite	16
Capraia	17
Pianosa	17
Mazzorbo	18
Burano	18
Folletto	19
Fantasy	19

Torcello Wheel Accessories

Center Caps	20
Optional Screw Covers and Trim Caps	20
Wheel Sectors	20
Spokes	20
Customer Photos	21

Ongaro Horns

All Stainless Steel Horns	22
Standard Horns	23

Wiper Products

Motors	24
Wiper Controller	24
Wiper Blades & Arms	25
Rocker Switch	25
Washer Tank	25
Spray Kit	25

Accessories

Control Arms and Knobs	26
Grab Rails	27
Bezels	27
Drink Holders, Stainless Steel	27

STAINLESS STEEL WHEELS

PRIMUS

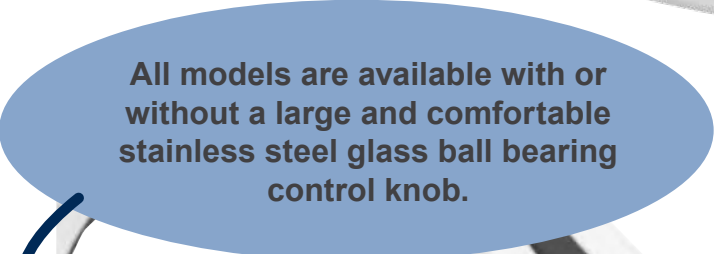
Models 740, 741, 742

The Primus is manufactured using a unified investment casting, including the integrated ring, for massive strength, and designed to deliver maximum ergonomic all-day comfort and engineered for long-lasting, uncompromising durability. The visually striking wheel complements any helm and comes with a lifetime warranty on the corrosion resistant stainless steel and three-years on the Santoprene™ rubber grip and inserts. Available in 13.5" and 15.5" diameters, the rim is slightly thicker than most other wheels. At 1-1/8",

the larger size lessens the hand fatigue that's common with thinner styles. UV-resistant black Santoprene™ rubber provides all-weather control and comfort, and a dramatic counterpoint to the gleaming stainless steel. Underneath, finger grips deliver a sure, solid grip. It extends through the top of the rim, providing additional gripping surface. Standard 3/4" tapered hub. The durable stainless steel center nut works with all steering systems. Center nut sold separately; refer to page 12.



The Primus wheels feature UV-resistant black Santoprene rubber finger grip and rim grip for all-weather control and comfort.



All models are available with or without a large and comfortable stainless steel glass ball bearing control knob.

Filled spoke slots with control knob

- 13.5" Dia.—#7401321FGK
- 15.5" Dia.—#7401521FGK

No control knob

- 13.5" Dia.—#7401321FG
- 15.5" Dia.—#7401521FG

Open spoke slots with control knob

- 13.5" Dia.—#7411321FGK
- 15.5" Dia.—#7411521FGK

No control knob

- 13.5" Dia.—#7411321FG
- 15.5" Dia.—#7411521FG

Solid spoke with control knob

- 13.5" Dia.—#7421321FGK
- 15.5" Dia.—#7421521FGK

No control knob

- 13.5" Dia.—#7421321FG
- 15.5" Dia.—#7421521FG

Powder Coated PRIMUS Models 740, 741, 742

The powder-coated Primus is manufactured using a unified investment casting, including the integrated ring, for massive strength, and has a deep, rich, durable black powder coated finish. The result is a lustrous finish that's impervious to weather, with little maintenance needed. Available in 13.5" and 15.5" diameters. A thick, generous 1 1/8" wide finger grooved rim combined with UV-resistant black Santoprene rubber inserts provide utmost control, and delivers all-day cushioned comfort. The wheel features an ergonomic control knob with corrosion-resistant glass ball bearings for trouble-free spinning, 3/4" tapered shaft and the center nut fits all standard marine steering systems. Other colors available (minimum commitment required).



Filled spoke slots with control knob
 • 13.5" Dia.—#740132BFGK
 • 15.5" Dia.—#740152BFGK

Open spoke slots with control knob
 • 13.5" Dia.—#741132BFGK
 • 15.5" Dia.—#741152BFGK



Solid spoke with control knob
 • 13.5" Dia.—#742132BFGK
 • 15.5" Dia.—#742152BFGK

Customer Photos



Powder Coated Primus #740132BFGK
 Photo courtesy of:
 PROXAM
 France



Primus #7421321FGK
 Photo courtesy of:
 Grady White Boats
 North Carolina



Primus #7421321FGK
 Photo courtesy of:
 SÔLACE Boats by Stephen Dougherty
 Florida



Primus #7401321FGK
 Photo courtesy of:
 Sea Pro Boats
 South Carolina

Evo Pro

Models 726, 725, 724

Features: Black Polyurethane Grips • Control Knob w/Glass Ball Bearings • 316 SS Center Spoke • Fits 3/4" Tapered Shaft

Center Nut sold separately (refer to page 12)



EVO PRO w/ELITE KNOB • with all stainless steel control knob; shown with stainless steel faux center nut kit - CAP0303
• 13.5" Diameter - #7261321FGK
• 15.5" Diameter - #7261521FGK

EVO PRO • with stainless steel control knob w/black O-rings; shown with center cap w/black O-ring
• 13.5" Diameter - #7251321FGK
• 15.5" Diameter - #7251521FGK



EVO PRO • with black control knob w/chrome O-ring; includes a black plastic center cap
• 13.5" Diameter - #7241321FGK
• 15.5" Diameter - #7241521FGK
No control knob
• 13.5" Diameter - #7241321FG
• 15.5" Diameter - #7241521FG



Evolution Elite

Model 721

Center Nut sold separately (refer to page 12)



Evolution Elite • with finger grips and stainless steel control knob w/glass ball bearings • cast 316 stainless steel center spoke • 3/4" tapered shaft
• 13.5" Diameter - #7211321FGK
• 15.5" Diameter - #7211521FGK

Evolution

Model 720

Center Nut sold separately (refer to page 12)



Evolution • with finger grips and standard control knob w/flange bearings • cast 316 stainless steel center spoke • 3/4" tapered shaft
• 13.5" Diameter - #7201321FGK
• 15.5" Diameter - #7201521FGK
No control knob
• 13.5" Diameter - #7201321FG
• 15.5" Diameter - #7201521FG

Vision Elite/Vision FX

Models 716, 714

Vision is the industry standard saltwater cast wheel • Stainless steel construction with stainless steel 316 castings • Available with or without control knob • Control knob is welded to the inside on the spoke • Lifetime corrosion warranty. Center Nut sold separately (refer to page 12)

Vision Elite • with finger grips and stainless steel control knob w/glass ball bearings • cast 316 stainless steel center spoke • 3/4" tapered shaft
• 13.5" Diameter - #7161321FGK
• 15.5" Diameter - #7161521FGK



Vision FX • with finger grips and control knob w/flange bearings • cast 316 stainless steel center spoke • 3/4" tapered shaft
• 13.5" Diameter - #7141321FGK
• 15.5" Diameter - #7141521FGK
No control knob
• 13.5" Diameter - #7141321FG
• 15.5" Diameter - #7141521FG

Destroyer *Since 1962*

Models 170, 150



- DESTROYER** • 5 spoke • standard polished rim
 • 3/4" tapered shaft, includes black center cap
 • 13.5" Diameter - 3/8" Spoke • 22° Dish - #1721321
 • 15.5" Diameter - 3/8" Spoke • 10° Dish - #1721511
 • 15.5" Diameter - 3/8" Spoke • 22° Dish - #1721521

- FINGER GRIP DESTROYER** • 5 spoke w/finger grips and control knob • 3/4" tapered shaft, includes stainless steel center cap
 • 13.5" Diameter • 1/2" Spoke • 22° Dish - #1731321FGK
 • 15.5" Diameter • 1/2" Spoke • 22° Dish - #1731521FGK
 No control knob, includes black center cap
 • 13.5" Diameter • 1/2" Spoke • 22° Dish - #1731321FG
 • 15.5" Diameter • 1/2" Spoke • 22° Dish - #1731521FG



- POLYURETHANE DESTROYER** • 5 Spoke w/polyurethane finger grip • 3/4" tapered shaft, includes black center cap • optional chrome center cap available
 • 14" Diameter • 1/2" Spoke • 22° Dish - #1731421P2
 • 16" Diameter • 1/2" Spoke • 22° Dish - #1731621P2

- DESTROYER** • 6 spoke, standard polished rim • 3/4" tapered shaft, includes black center cap • Optional 1" straight shaft for 15.5" – 30"
 • 11" Diameter • 3/8" Spoke • 10° Dish - #1521111
 • 11" Diameter • 1/2" Spoke • 10° Dish w/Knob - #1531111K-H
 • 15.5" Diameter • 3/8" Spoke • 10° Dish - #1521611
 • 15.5" Diameter • 3/8" Spoke • 22° Dish - #1521621
 • 18" Diameter • 3/8" Spoke • 10° Dish - #1521811
 • 20" Diameter • 3/8" Spoke • 10° Dish - #1522011
 • 22" Diameter • 3/8" Spoke • 10° Dish - #1522211
 • 24" Diameter • 3/8" Spoke • 10° Dish - #1522411
 • 28" Diameter • 1/2" Spoke • 10° Dish - #1532811
 • 30" Diameter • 1/2" Spoke • 10° Dish - #1533011



Orion

Model 430



- ORION** • with finger grips and control knob w/glass ball bearings
 • highly polished stainless steel wheel • 3/4" tapered shaft, includes stainless steel center cap
 • 13.5" Diameter • 1/8" Spoke • 22° Dish - #4361321FGK
 • 15.5" Diameter • 1/8" Spoke • 22° Dish - #4361521FGK
 No control knob
 • 13.5" Diameter • 1/8" Spoke • 22° Dish - #4361321FG
 • 15.5" Diameter • 1/8" Spoke • 22° Dish - #4361521FG

Sailboat



- SAILBOAT** • 6 spoke • standard polished rim • hub size 2-1/4" diameter, 1" straight, 2-1/8" long • spacers available for 2-1/4" and 2-3/8" length requirement
 • 20" Diameter • 3/8" Spoke • Flat Dish #5322090
 • 22" Diameter • 3/8" Spoke • Flat Dish #5322290
 • 24" Diameter • 3/8" Spoke • Flat Dish #5322490
 • 26" Diameter • 1/2" Spoke • Flat Dish #5332690
 • 28" Diameter • 1/2" Spoke • Flat Dish #5332890
 • 30" Diameter • 1/2" Spoke • Flat Dish #5333090
 • 32" Diameter • 1/2" Spoke • Flat Dish #5333290
 • 36" Diameter • 1/2" Spoke • Flat Dish #5333690

Yacht

High polished, cast 316 stainless steel • Originally designed for Viking Yachts • A great wheel for sport fishing boats with outside or fly bridge controls.



- 3/4" Teleflex tapered shaft**
 • 13.5" Diameter #51302
 • 15.5" Diameter #50002

- 1" Flush mount shaft w/bolt**
 • 13.5" Diameter #51304
 • 15.5" Diameter #50004



Ongaro yacht wheel and control arms shown on a 44' Viking Convertible.



Center Nuts and Center Caps



Faux Center Nuts for Cast Wheels

(Fits Models 714, 716, 720, 721, 724, 725, 726, 730, 740)

316 Stainless Steel, includes 5/8" and 1/2" (M12) Base: #CAP0303

316 Stainless Steel, 5/8" base: #CAP0305

316 Stainless Steel, 1/2" base: #CAP0307

Chrome ABS Plastic, includes 5/8" and 1/2" (M12) Base: #CAP0304

Chrome ABS Plastic, 5/8" base: #CAP0306

Chrome ABS Plastic, 1/2" base: #CAP0308

Black Powder Coated 316 SS, includes 5/8" and 1/2" (M12) Base: #CAP030B

Stainless Steel Center Nuts for Cast Wheels

(Fits models 714, 716, 720, 721, 724, 725, 726, 730, 740)

1/2" Nut for Most Manual Steering: #712NUT

5/8" Nut for Most Hydraulic Steering: #758NUT

12mm Nut for UFLEX Steering Systems: #702NUT

Engraved Center Nuts

*Builder logo engraved on stainless steel nuts



Center Caps

Stainless Steel Cap (Fits models 150 & 170): #CAPSLG

Stainless Steel Cap (Fits models 310 & 410): #CAPSSM

Black Plastic Cap (Fits models 150 & 170): #CAP2L

Black Plastic Cap (Fits models 310 & 410): #CAP2S

Snap-in Chrome Cap (Fits models 150 & 170): #CAP0100

Stainless Steel Cap (Fits model 436): #CAP436SS

Engraved Center Caps *Builder logo engraved on stainless steel caps



Stainless Steel Center Nuts for Evo Pro Wheels

(Fits Models 724, 725, 726)

1/2" Nut w/Black O-Ring: #CN100415

5/8" Nut w/Black O-Ring: #CN100417

12mm Nut w/Black O-Ring: #CN100418



Black Plastic Nut Cover w/Stainless Steel Band (Evo Pro): #CN100416



Counter Bored Black Plastic Cap

(Fits Models 150, 170)

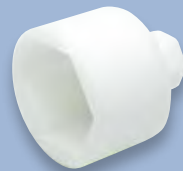
3 sizes available to adhere your logo

1-7/16" #CC2L

1-1/2" #CC3L

1-3/4" #CC4L

Nut Driver for Cast Nuts #700ND



*Stainless steel nuts/caps can be engraved for a one-time logo set-up fee and a per nut/cap engraving fee.

Customer Photos



Model 30 #PU301404-44

Photo courtesy of BRP, Michigan



Mazzorbo #PU205101-04

Photo courtesy of Crownline, Illinois



Burano #PU1051B1-04

Photo courtesy of G3 Boats, Missouri



Torcello Series 05 #PU0511B4-12

Photo courtesy of Viaggio, Indiana



Torcello Series 04 #PU041144-12

Photo courtesy of BoatLab/Finval Boats, Ukraine

LEATHER WRAPPED WHEELS

Torcello Elite

The 14" [360mm] Torcello Elite conveys luxury and style on any boat. The wheel is luxuriously wrapped in hand-stitched marine-grade synthetic leather and the driver will appreciate the exceptional feel and comfort of the grip. Designed to be customized in quantity to match virtually any boat interior, the Torcello Elite can be manufactured in an endless array of leather and stitching color combinations. The three thick aluminum spokes are available in polished or black anodized finishes to enhance the decor and a choice of attractive center caps are offered. Available with a 3/4" tapered or optional spline hub.



#PU085241
Black leather wrapped with white stitching and polished spoke



#PU081B11
Biege leather wrapped with white stitching and black spoke



#PU085341
Black leather wrapped with red stitching and polished spoke

POLYURETHANE WHEELS

Torcello

The 14" [360mm] polyurethane Torcello wheels allow you to select your level of decoration to match your boat's décor and budget. Additional configurations are possible, including an optional spline hub. Contact us to discuss your customization needs.

Torcello 05 Series • Our most customizable, decorative polyurethane wheel



#PU051114-12
Black spoke, chrome spoke trim, rim trim, scallop cap, burl wheel sectors and 3/4" tapered hub.



#PU0511C4-13
Black spoke, matte silver spoke trim, rim trim, scallop cap, silver wheel sectors and 3/4" tapered hub.

Torcello 04 Series



#PU041144-12
Black spoke, chrome spoke trim, rim trim, scallop cap and 3/4" tapered hub.



#PU043144-12
Brushed spoke, chrome spoke trim, rim trim, scallop cap and 3/4" tapered hub.



#PU041144-02
Black spoke, no spoke trim, chrome rim trim, scallop cap and 3/4" tapered hub.



#PU045144-12
Polished spoke, chrome spoke trim, rim trim, scallop cap and 3/4" tapered hub.

Torcello 03 Series



#PU031104-12
Black spoke, chrome spoke trim, chrome scallop cap and 3/4" tapered hub.



#PU033104-01
Brushed spoke, no spoke trim, black plastic cap and 3/4" tapered hub.



#PU031104-02
Black spoke, no spoke trim, chrome scallop cap and 3/4" tapered hub.



#PU035104-01
Polished spoke, no spoke trim, black plastic cap and 3/4" tapered hub.

Torcello Lite

The 13" [330mm] Torcello Lite provides a sure, solid command of the helm. This exceptional yet economical wheel features three satin silver or black anodized aluminum spokes with stylish cut-outs. The ergonomic grip is cowhide leather-textured black polyurethane with accent areas having the look of perforated leather. The black center cap can be upgraded to chrome ABS for an additional charge.



#PU063104-01
Satin silver spoke, black plastic cap and 3/4" tapered hub.



#PU061104-02
Black spoke, chrome scallop cap (optional) and 3/4" tapered hub.

Capraia

Ruggedly built for use in fresh or saltwater, the three spokes of the 14" [360mm] diameter PU50 wheels are offered in a satin brushed or matte black anodized aluminum finish. The all-weather black polyurethane grip has the look and feel of genuine leather, and delivers a solid, quality grip. Chromed trim sections provide a soft transition between the wheel and spokes for all-day comfort. Available with 3/4" tapered or optional splined hub.



#PU501404
Black polyurethane, black spoke, chrome trim, and center cap.



#PU503404
Black polyurethane, brushed spoke, chrome trim, and center cap.

Pianosa

14" [360mm] diameter, black polyurethane, black or brushed spoke, and flexibility to customize wheel sectors, spoke inserts and center cap, 3/4" tapered hub or optional spline hub. Custom colors require a minimum commitment.



#PU301404-44
Black polyurethane, black spoke, chrome trim, highlights and cap, 3/4" tapered hub.



#PU303104-11
Black polyurethane, brushed spoke, black trim, highlights and cap, 3/4" tapered hub.



#PU3214F4-44
Black polyurethane, silver satin sectors, black spoke, chrome trim, highlights and cap, 3/4" tapered hub.



#PU3234D4-44
Black polyurethane, greywood sectors, brushed spoke, chrome trim, highlights and cap, 3/4" tapered hub.



Mazzorbo

The 14" [360mm] Mazzorbo features an all polyurethane grip, 316L cast stainless steel spokes, multi-faceted center cap with distinctive chrome trim ring, and 3/4" tapered hub. This wheel is perfect for runabouts, waterski and waterboard boats, premium pontoon boats and cruisers.



#PU205101-04



Photo courtesy of Crownline

Folletto

The 14" [360mm] Folletto wheel features an all polyurethane grip, 3/4" tapered hub or optional spline hub, and black plastic center cap (CCIT).



#PU021104

Black spoke and black plastic cap (CCIT)



#PU025104

Polished spoke shown with optional chrome ABS scallop cap (CAP0103)

Burano

The 14" [360mm] Burano features an all polyurethane grip with the look and feel of fine, hand-stitched leather, a durable and low maintenance stainless steel frame construction, unique polished, tubular spokes, customizable spoke inserts (minimum commitment required), ABS center cap, 3/4" tapered hub or optional spline hub. Stock insert colors: Burl and Black Pearlwood, shown below.



#PU105111-04

Burl



#PU1051B1-04

Black Pearlwood

Fantasy

The 13.5" [350mm] Fantasy wheel features an all polyurethane grip, 3/4" tapered hub or optional spline hub, and plastic center cap.



#PU013104

Brushed spoke and black plastic cap (CCIT)



SCHMITT
STEERING WHEELS

www.schmittongaromarine.com • (717) 431-2316 or (866) 724-6488 • sales@schmittongaromarine.com

Clouds International B.V. www.clouds.nl mail@clouds.nl 0348-551644

Torcello Wheel Accessories

Here is a sample of colors available to customize your wheel. Custom colors are available with minimum commitment. Contact sales@schmittongaromarine.com for additional information and pricing.

Center Caps



Chrome Scallop Cap (CAP0103) Matte Silver Scallop Cap (CAP0205)



Black Plastic Cap (CCIT)

Optional Screw Covers and Trim Caps



Silver (JV120003) Burl (JV12000B) Carbon Black (JV120002)

Spokes

Brushed/Silver Anodize

High Polish

Black Anodize

Black PU

Wheel Sectors

Matte Silver

Carbon Black

Burl

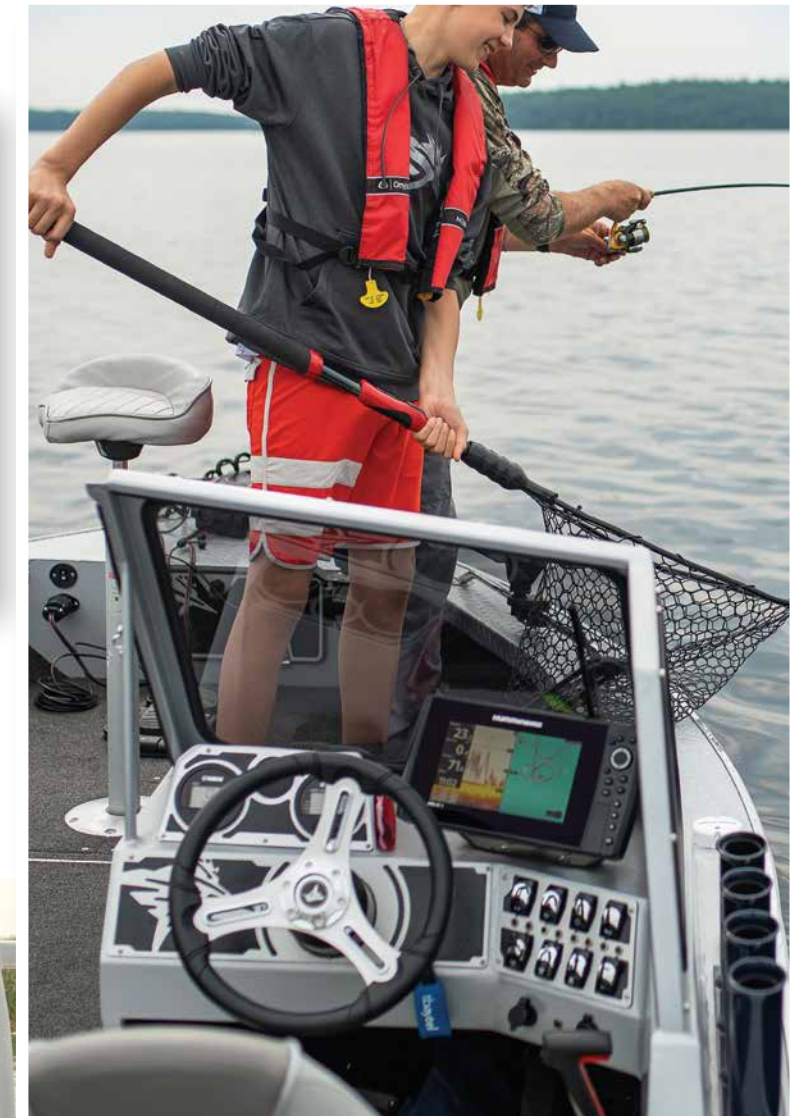
Silver

Custom Colors Available

SCHMITT MARINE is **STEERING** the way to your next water adventure!



Destroyer 5-spoke #1731321FGK
Photo courtesy of Avid Boats, Mississippi



Vision Elite #7161321FGK
Photo courtesy of Apex Marine, Michigan

Torcello Series 03 #PU033104-02
Photo courtesy of Kingfisher, British Columbia

ONGARO HORNS

All Stainless Steel Horns

- 304 Stainless Steel inside & out including sealed sound unit • Rubber gasket
- **Waterproof w/drain hole** • No rust guarantee for (5) years • Pre-wired
- A much deeper, crisper, and clearer sound than competitive models.



Drain hole

Trumpet Horns

Deluxe All Stainless Steel Single Trumpet

16-1/2"L x 4"W x 4-3/4"H. (42 x 10 x 11.5 cm)
Max. Amp Draw: 12V 4A, 24V 2A • Rating: 120 db @ 1 M • FF: 388 Hz ± 20

- 12V w/Drain Hole - #10027
- 24V w/Drain Hole - #12427



Deluxe All Stainless Steel Dual Trumpet

18-1/2"L x 8"W x 5"H. (47 x 20.5 x 12.5 cm)
Max Amp Draw: 12V 8A, 24V 4A • Rating: 125 db @ 1 M • FF: 321 Hz ± 20 Meets ABYC A-23 for boats up to 20 meters

- 12V w/Drain Hole - #10028
- 24V w/Drain Hole - #12428



Deluxe All Stainless Steel Shorty Single Trumpet

13-1/2"L x 3-1/2"W x 4"H. (35.5 x 9 x 10 cm)
Max. Amp Draw: 4 Amps • Rating: 114 db @ 1 Meter • FF: 410 Hz ± 20

- 12V w/Drain Hole - #10009



Deluxe All Stainless Steel Shorty Dual Trumpet

16"L x 7-1/2"W x 4"H. (40.5 x 19 x 10 cm)
Max. Amp Draw: 7 Amps • Rating: 120 db @ 1 Meter • FF: 351 Hz ± 20

- 12V w/Drain Hole - #10012



Mini Horns

All Stainless Steel Mini Compact Twin

3"L x 8"W x 1-3/4"H. (7.5 x 8 x 4.5 cm)
Max Amp Draw: 6 Amps • Rating: 112 db @ 1 Meter • FF: 403 Hz ± 20

- 12V - #10002



All Stainless Steel Mini Compact Single

3"L x 3-1/4"W x 1-3/4"H. (7.5 x 8 x 4.5 cm)
Max Amp Draw: 3 Amps • Rating: 105 db @ 1 Meter • FF: 410 Hz ± 20

- 12V - #10036



All Stainless Steel Mini Drop-In Dual • 12 Volt High & Low Pitch

High Pitch & Low Pitch: 3"L x 3-1/4"W x 1-3/4"H. (7.5 x 8 x 4.5 cm) • Grill Dimension: 4-7/8" x 2-3/8" with 4" hole centers • Max Amp Draw: 6 Amps • Rating: 114 db @ 1 Meter Installed • FF: 410 Hz ± 20

- 12V - #10055



All Stainless Steel Mini Drop-In Single • 12 Volt High or Low Pitch

3"L x 3-1/4"W x 1-3/4"H. (7.5 x 8 x 4.5 cm) • Grill Dimension: 4-7/8" x 2-3/8" with 4" hole centers • Max Amp Draw: 3 Amps • Rating: 106 db @ 1 Meter Installed • FF: 410 Hz ± 20

- Low pitch - #10050 • High pitch - #10051



All Stainless Steel Mini Hidden Compact Single

3"L x 3-1/4"W x 1-3/4"H. (7.5 x 8 x 4.5 cm)
Max Amp Draw: 3 Amps • Rating: 105 db @ 1 Meter • FF: 410 Hz ± 20

- 12V - #11032

Standard Horns

- 304 Stainless Steel Housing, diaphragm and mounting brackets • Pre-wired
- A much crisper and clearer sound than the competitive models.

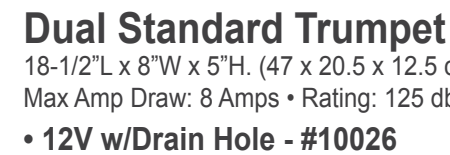
Trumpet Horns



Single Standard Trumpet

16-1/2"L x 4"W x 4-1/2"H. (42 x 10 x 11.5 cm) Max. Amp Draw: 4 Amps • Rating: 120 db @ 1 Meter • FF: 388 Hz ± 20

- 12V w/Drain Hole - #10025



Dual Standard Trumpet

18-1/2"L x 8"W x 5"H. (47 x 20.5 x 12.5 cm)
Max Amp Draw: 8 Amps • Rating: 125 db @ 1 Meter • FF: 321 Hz ± 20

- 12V w/Drain Hole - #10026



Mini Horns



Standard Mini Compact Twin

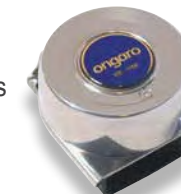
3"L x 8"W x 1-3/4"H. (7.5 x 8 x 4.5 cm)
Max Amp Draw: 6 Amps • Rating: 112 db @ 1 Meter • FF: 403 Hz ± 20

- 12V - #10001

Standard Mini Compact Single

3"L x 3-1/4"W x 1-3/4"H. (7.5 x 8 x 4.5 cm) Max Amp Draw: 3 Amps • Rating: 105 db @ 1 Meter • FF: 410 Hz ± 20

- 12V - #10035



Standard Mini Hidden Compact Single

3"L x 3-1/4"W x 1-3/4"H. (7.5 x 8 x 4.5 cm)
Max Amp Draw: 3 Amps • Rating: 105 db @ 1 Meter • FF: 410 Hz ± 20

- 12V - #11031



Horn Button, Momentary, Red

Fits most dashboards
• Rated up to 15 Amps

- #10000



ONGARO MARINE

www.schmittongaromarine.com • (717) 431-2316 or (866) 724-6488 • sales@schmittongaromarine.com

Clouds International B.V. www.clouds.nl mail@clouds.nl 0348-551644

Motors



Heavy Duty Waterproof Wiper Motor - Torque 18 N·m [13.3 ft.lb]
 5/8" 316 SS Shaft • Rigid Aluminum Housing • Adj Sweep 40-110 Degree • Adjustable Park Position Right or Left • 2 Speeds • Will Power Up To 24" Arm & 24" Blade • Limited 3 Year Warranty

1.5" Shaft: #33611 - 18 N·m, 12V #33612 - 18 N·m, 24V
2.5" Shaft: #33621 - 18 N·m, 12V #33622 - 18 N·m, 24V
3.5" Shaft: #33631 - 18 N·m, 12V #33632 - 18 N·m, 24V

Heavy Duty Motor - Torque 18 N·m [13.3 ft.lb]

Black Powder Coated Housing • 304 SS Mtg. Hardware • 5/8" 316 SS Shaft • Chrome Plated Brass Shaft Housing • Adj. Sweep 40 - 110 Degree • Adj. Park Position Right or Left • 2 Speeds • Will Power up to a 24" Arm & 24" Blade • Limited 3 Year Warranty

1.5" Shaft: #31991 - 12V #31992 - 24V
2.5" Shaft: #30991 - 12V #30992 - 24V
3.5" Shaft: #32991 - 12V #38992 - 24V



Standard Motor - Waterproof White

Powder Coated Aluminum Cover • 304 SS Mounting Plate, 3/8" Shaft and Hardware
 Adjustable Sweep Angle 80° or 110° • Adjustable Park Position Right or Left • Will Power Up To 14" Arm & 14" Blade • 12V • Pre-wired • Limited 3 year warranty

#33001 - 12V

Standard Motor - Non-Waterproof Black

Powder Coated Aluminum Cover • 304 SS Mounting Plate, 3/8" Shaft and Hardware
 Adjustable Sweep Angle 80° or 110° • Adjustable Park Position Right or Left • Will Power Up To 14" Arm & 14" Blade • 12V • Limited 3 year warranty

#31001 - 12V



Standard Wiper Motor Kits

Powder Coated Aluminum Cover • 304 SS Mounting Plate, 3/8" Shaft & Mounting Hardware • 80 or 110° Adj. Sweep • Will Power up to a 14" Arm & Blade • Limited 3 Year Warranty

Std Waterproof Motor Kit, 12V, 2.5" Shaft, Adjustable Arm & 11" Blade: #33002
Std Waterproof Motor Kit, 12V, 2.5" Shaft, Adjustable Arm & 14" Blade: #33003
Std Motor Kit w/11"-14" Arm & 11" Blade: #31011 (3/8" shaft width)
Std Motor Kit w/11"-14" Arm & 14" Blade: #31014 (3/8" shaft width)
Replacement Arm for Standard Motor • 11" - 14" • 3/8" Shaft: #33680

Wiper Control System w/Switch

For 1 to 3 Motors, 12 - 24V, Max 5A/Motor • Fits Ongaro Motors • Rocker Switch Included
 With 3 Motors connected it runs the helm seat or all motors • Synchronized sweep • Interval • Slow speed • Fast speed • Washing system

#32010 - 12V

#32011 - 24V



Wipers Blades, Arms, and Accessories

Deluxe Blades

Powder coated • natural rubber blade
 • packed w/2 adapters to fit **ALL** Ongaro Deluxe Arms and most competitive arms.

11" #33011 12" #33012 14" #33014 16" #33016
18" #33018 20" #33020 22" #33022 24" #33024



Deluxe Arms

Black powder coated stainless steel • heavy duty stainless steel spring
 • easy to install • replaces most competitive arms • 5/8" shaft • compatible with Ongaro Standard and Heavy Duty Motors

Adjustable Arm	12"-18"	#33640
Adjustable Arm	19"-24"	#33641
Adjustable J-Hook	12"-18"	#33650
Adjustable J-Hook	19"-24"	#33651
Adj J-Hook, Adj Tip	12"-18"	#33660
Adj J-Hook, Adj Tip	19"-24"	#33661
Parallel Arm	12"-18"	#33670
Parallel Arm	19"-24"	#33671

Heavy Duty Rocker Switch

2-speed works with Ongaro and other competitive wiper motors (3 position switch).

#40400



Washer Tank

Polypropylene tank with motor, pump, tubing and mounted spray fittings.
 Holds three (3) quarts.

#31130 - 12V

#31131 - 24V

Spray Kit for Deluxe Wiper Arms

Spray kit includes two arm mounted sprayers, one hose connector, four hose clamps.

#31157



Control Arms & Knobs

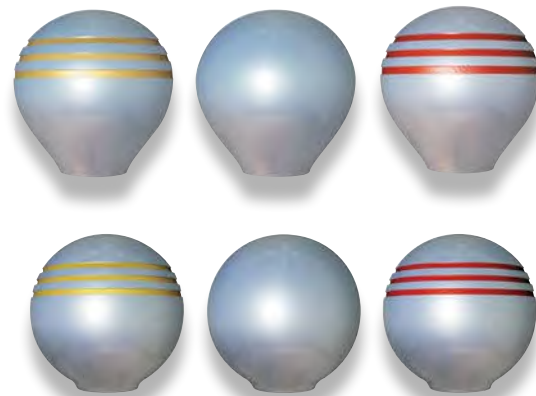
316 cast stainless shaft • Standard arms fit most Morse Twin SR • CH 5600 controls • Yacht arm fits most single level side mount controls • 1-1/2" throttle and shift knobs fit Morse MY-3, MV-2, twin and single controls with 3/8"-24 threads • 1-7/8" throttle and shift control knobs fit Hynautic D-Dec/Sturdy controls • Throttle knobs are colored for sight and grooved for feel • Meets ABYC specifications • US Patent # 5,878,628



Control/Shift Arm Sets (housing unit not included)
 Set of 2 w/Red Throttle Knob #50050
 Set of 2 w/Gold Throttle Knob #50055

Control Knobs

Knob, Throttle • Gold 1-1/2" Dia, 3/8"-24 Thread #50025
 Knob, Shift • 1-1/2" Dia, 3/8"-24 Thread #50030
 Knob, Throttle • Red 1-1/2" Dia., 3/8"-24 Thread #50020



Knob, Throttle • Gold, 1-7/8" Dia, 3/8"-24 Thread #50048
 Knob, Shift • 1-7/8" Dia, 3/8"-24 Thread #50040
 Knob, Throttle • Red, 1-7/8" Dia, 3/8"-24 Thread #50044



Arms

Arm, Standard • Fits Teleflex Morse Twin SR and CH5600 Controls #50010
 Arm, Yacht • Fits most Single Lever Side Mount Controls #50015
 Lever, Yacht Arm with Bow Thruster Button #50016

Grab Rails

Designed to last, our cast 316 stainless steel grab rail will add beauty and utility to your boat at a price point as attractive as the grab rails themselves. We will work with boat builders to custom color match for your interiors. (Minimum order quantities apply.)

Under Mount Grab Rail, Black

- Cast 316 Stainless Steel with engineered Santoprene™ grip insert
- Firm, safe, comfortable grasp • 9" length
- Under mounted with 1/4-20 screws (studs not included):

#GRB0101



Under Mount

Top Mount Grab Rail, Black

- Cast 316 Stainless Steel with engineered Santoprene™ grip insert
- Firm, safe, comfortable grasp • 9" length
- Top mounted with 1/4-20 screws (studs not included):

#GRB0201



Top Mount

Bezels



Chrome Plated ABS	Black Chrome Plated ABS
2" #BEZ0200	2" #BEZ0201
3" #BEZ0300	3" #BEZ0301
5" #BEZ0500	5" #BEZ0501

Stainless Steel Drink Holders



Drink Holder w/Drain & Plug (Aftermarket Pack)
 Width: 3.5" including a 3/8" flange • Height: 3.5" Fits: 3.5" hole: #60002



Drink Holder w/Flange Gasket (Aftermarket Pack)
 Width: 3.5" including a 1/4" flange • Height: 2.75" Fits: 3" hole: #60012



SCHMITT MARINE

DEALER:

Clouds International B.V.
www.clouds.nl
mail@clouds.nl
0348-551644

Schmitt Marine

1001 Ranck Mill Road - Lancaster, PA 17602 U.S.A.

Phone: 1.717.431.2316 Fax: 1.717.431.2319

Toll Free Phone: (866) 724.6488 Fax: (866) 329.7679

