



COMMERCIAL, MILITARY AND SOLAS APPLICATIONS

MARINE DIESEL ENGINES

BUKH 24-700HP



www.bukh.dk

125 Years

of experience with diesel engines



“Our goal is not short-term profit but long-term success”

Søren Christiansen, CEO/Owner of BUKH A/S



BUKH – the most reliable marine engines in the world.

With **125 years of experience** BUKH A/S is one of the world's leading OEM manufacturers of Marine Diesel Engines for lifeboats, fast rescue boats and work boats.

Dedication to life and safety at sea is our number one priority

In 1995 we decided to merge our two companies **Motorfabrikken BUKH A/S** and **Aabenraa Motorfabrik Heinrich Callesen A/S**. At first into the name of Aabenraa Motorfabrik – a name we changed to **BUKH A/S** in 2010.

Lifeboat engines are our main product range. But the selection of engines has been extended to cover other power ranges and segments through close co-operation with acknowledged global partners who all share our vision of commitment and quality. The quality of our products is ensured by type approval of the engines and ISO certification of BUKH A/S.

From tractors and generators to lifeboat engines

Founded in 1899, Aabenraa Motorfabrik launched their **first marine engine in 1904**, the same year as Motorfabrikken BUKH was founded. While Aabenraa Motorfabrik focused entirely on supplying fishing boats and freighters worldwide with heavy-duty Callesen engines, Motorfabrikken BUKH engaged successfully in the tractor and emergency power generating segments and developed engines for small work boats and pleasure boats.

This kind of engine turned out to be very suitable for lifeboats, so Motorfabrikken BUKH phased out the production of tractors and generators to focus on lifeboat engines.

Today we continue to improve our engines and extend our range to meet the markets' demands.

BUKH LIFEBOAT ENGINES

and Commercial Applications

24-48 HP

- *Lifeboats/Work Boats/Small Fishing Vessels etc.*
- *Up to 6 different starting systems*
- *Hand start*
- *Cold Start certified down to minus 40° C*
- *24-48HP*
- *SOLAS approved*
- *Heavy Duty Continuous rating*
- *100,000+ manufactured*



DV29



DV32



DV36



DV48

BUKH DV24 / DV29 / DV32 / DV36 / DV48

2 or 3 cylinders - 24/29/32/36/48 HP at 3,600 rpm

The classic SOLAS approved BUKH DV is a genuine marine engine designed for a rough life at sea. It is a robust heavy-duty engine that meets the authorities' – and users' – uncompromising demands for operational reliability. The engine withstands idle life in the lifeboat under extreme weather conditions. All these features establish the BUKH DV engines as the first choice of many lifeboat builders.

SOLAS approved starting systems

The traditional electric start can be combined with

- Hand start
- Hydraulic start
- Spring start

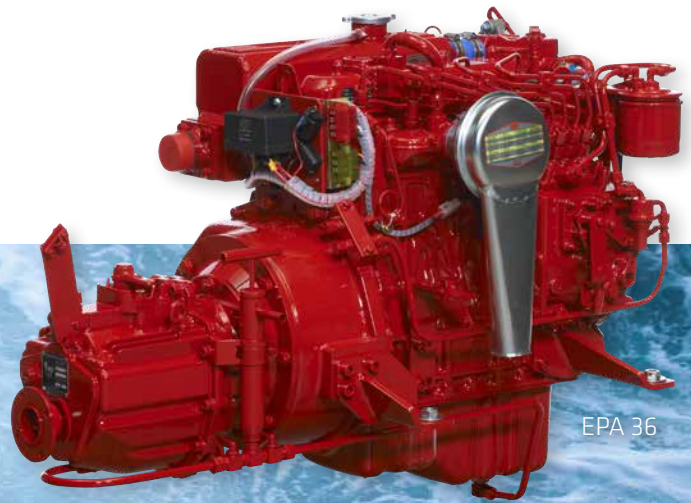
For working in polar environments, we can install DNV certified cold starting system that operates down to -40°Celsius/-40°Fahrenheit.

More than 100,000 BUKH DV engines have been manufactured since the model was introduced.

A solid proof of durability and simplicity for any work environment!



EPA 28



EPA 36



EPA 48

BUKH EPA LIFEBOAT ENGINES

BUKH EPA 28 / EPA 36 / EPA 48

3 or 4 cylinders - 28/36/48 HP at 2,800-3,600 rpm

The BUKH EPA engine sets new standards for low exhaust emissions. It features pre-combustion chamber injection with glow plugs, which eliminates the need for vulnerable electronic devices for control of fuel volumes. The design meets the Tier 3 standards and all models have obtained US Coast Guard approval for use in lifeboats.

SOLAS approved starting systems

The traditional electric start can be combined with

- Hydraulic start
- Spring start

Standard and optional equipment for DV and EPA engines

There is a wide range of standard and optional equipment for DV and EPA engines. Reverse-reduction gear, wet sump lubrication system, operating remote panel and other kinds of features are standard on both types.

You can choose among different optional equipment such as spray pump, instrument panel and other accessories. For more details, see the leaflet on each model and visit our website

www.bukh.dk



FAST RESCUE BOATS

and other Commercial HIGH-SPEED Applications

175-530 HP

- *Wide power range to suit all customer demands*
- *Light, quiet and fuel efficient*
- *Compliant with strictest exhaust emission standards*
- *Cold start available down to minus 30°C*
- *SOLAS approved/other commercial applications*



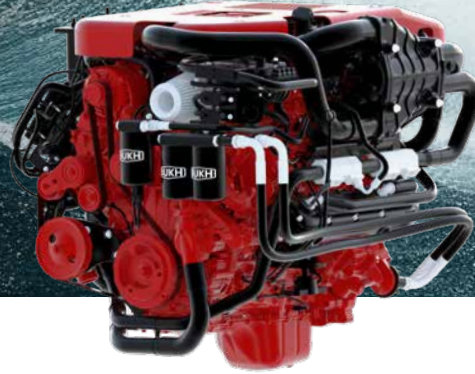
BUKH R175



BUKH R210



BUKH S270



BUKH V8P Series

BUKH R175 / R210 / S270 / V8P 300-530

BUKH is your number one marine diesel engine supplier

BUKH offers an extensive range of tailor-made engines for fast rescue craft and a wide range of engines for other commercial applications, giving you the benefit of the experience that comes from being a high quality engine supplier since 1899.

With our range of modern marine diesel engines and our focus on high power, fuel efficiency, and compliance with strictest exhaust emission standards, we give our clients the perfect platform to make the right decision for the right engine from one supplier.



Emissions / Ratings

All models are with the newest injection and optimized combustion system ensuring that the engines satisfy the world's strictest exhaust emission standards.

The power range offers ratings from High Speed Craft rating to Medium Continuous Commercial rating, giving you a choice of engines suitable for 1,000 hours/year up to 3,000 hours/year. See chart for more information.

For more details, see the leaflet on each model and visit our website www.bukh.dk.

The best choice for your fast rescue boat application!

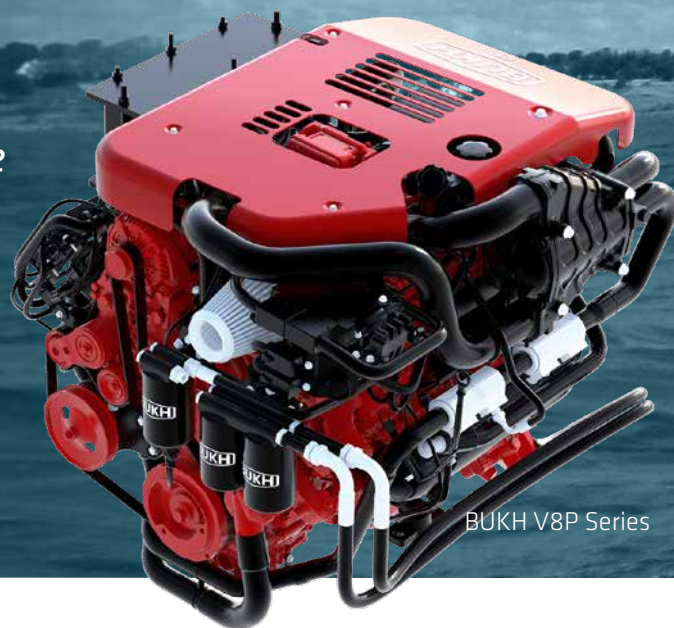


V8P SERIES MARINE DIESEL

6.6 Liter Diesel Performance

300-530 HP

- V8P 6.6L
- *Combat mode, dual mapping or other custom upgrades available.*
- *Unique hp to weight ratio*
- *Compact lightweight diesel engine*
- *Suits both commercial & leisure applications*
- *Strong Duramax base engine*
- *High performance*
- *Compact design*



BUKH V8P Series

V8P POWER RANGE 300-530 HP

Unique hp to weight ration

The BUKH V8P has a unique hp to weight ratio that is one of the best in the market. With the V8P-530 HP you get 1.07 hp per kg and also the advantage of a compact box-like design. A perfect match for high speed craft where performance is the number one priority. Simply performance and reliability – which BUKH is well known for.

Danish Engine Design

BUKH has been manufacturing diesel engines for 125 years. With more than a century of building engines we have put all our knowledge into the BUKH V8P engine. In the Danish production of the BUKH V8P our team of professional engineers has constantly been improving the engine. This makes the BUKH V8P one of the most innovated diesel engines in the market.





LIFEBOATS
RESCUE
MILITARY
WORK BOATS
LEISURE
MULTI PURPOSE BOATS

Custom design or ECU software solutions - made easy with BUKH V8P

BUKH offers a unique custom solution where the engine design can be tailored to the individual custom vessel projects.

Custom ECU software is also available as an option. BUKH already offers unique features like Combat mode, Dual mappings and more.

Multi purpose diesel engine

The BUKH V8P 6.6L is a powerful and compact light weight diesel engine that is designed to suit all commercial and leisure applications. With the strong Duramax base engine and marinization done by BUKH in Denmark, the BUKH V8P is the right choice when reliability, performance, compact and quality are the keywords for your project.



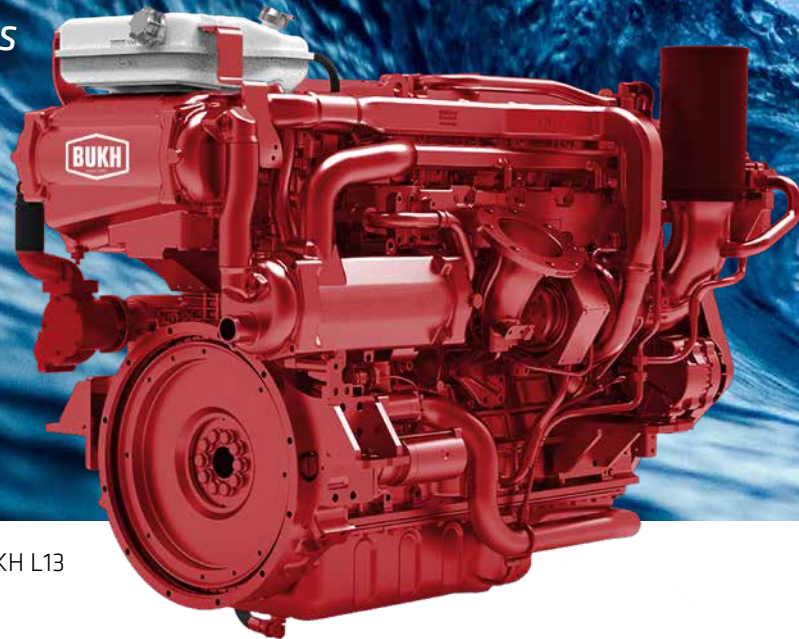
BUKH
V8P

HEAVY DUTY SOLAS ENGINES

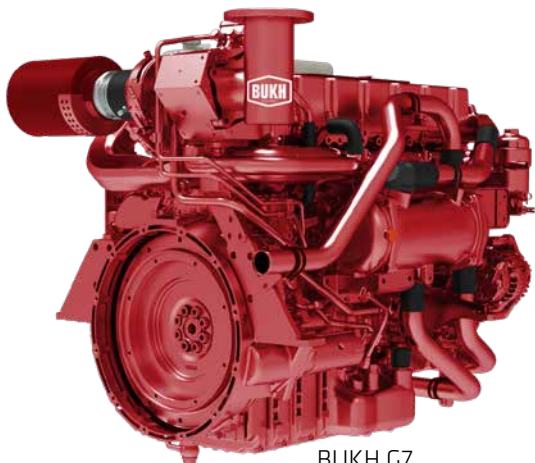
& Commercial Applications

238-700 HP

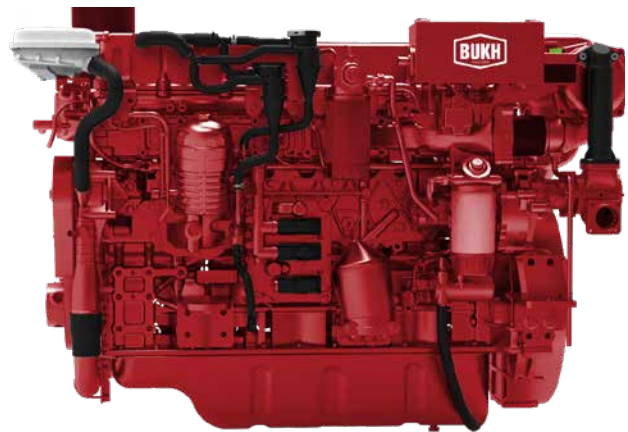
- *Compliant with strictest exhaust emission standards*
- *In-line 6 cylinder*
- *Light Duty to Continuous Duty ratings*
- *Designed for a rough life at sea*
- *Low fuel consumption*



BUKH L13



BUKH G7



BUKH H10

BUKH G7 / BUKH H10 / BUKH L13

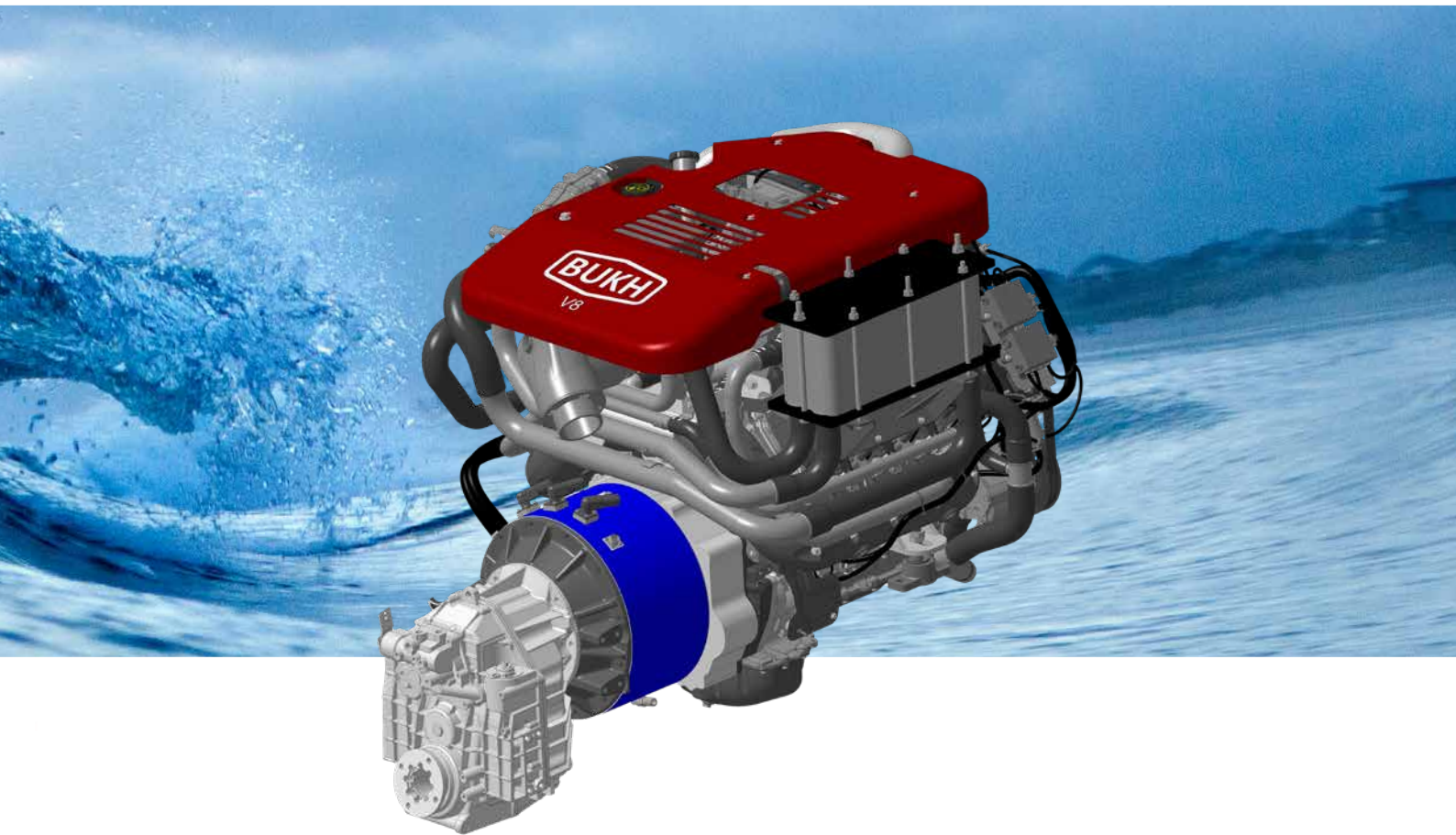
With the next generation BUKH SOLAS engines, BUKH meets the rising demand for more HP within the SOLAS segment with the brand new series from 238 to 700 HP. The engines are specially designed for commercial use and adapted to marine applications. The engine is solid built, with one full cast cylinder head, lower stiffening frame to reduce vibrations/noise, and the long life timing gears that ensure the commercial endurance of these engines.

For more details, see the leaflet on each model or visit our website www.bukh.dk.

HYBRID SYSTEM



Advanced Technology Equipment



BUKH R175J BHS
25kW @ 96V

BUKH R210J BHS
25kW @ 96V

BUKH S270J BHS
25kW @ 96V

BUKH V8P BHS
25kW @ 96V

The pleasure of silent navigation and low-emission mobility.

It's the perfect combination of all advantages offered by a conventional drive system and electric motor.

The hybrid systems combine a traditional marine endothermic engine and an electro motor with batteries and on-board units, exploring new opportunities to incorporate varying degrees of hybrid power into recreational or commercial boats.

Bukh engine model	kW	Hp	Rated speed rpm	Cyl. No.	Kg dry bobtail	Power hp to weight ratio	Rating	Rating max. hours	Rating max. hours per year	Keel cooling	Spring starter	Hydraulic starter	Handstart	2-pole electric	Spraypump	Double starter (2 x electric)	Coolant heater	Extra alternator (12V / 24V)	Front mounted PTO
BUKH DV24RME	17.6	24	3,600	2	210	0.114	S1	unlimited	5,000	S	O	O	O	#	O	O	O	#	#
BUKH DV29RME	21.3	29	3,600	2	210	0.138	S1	unlimited	5,000	S	O	O	O	#	O	O	O	#	#
BUKH DV32RME	23.5	32	3,600	2	210	0.152	S1	unlimited	5,000	S	O	O	O	#	O	O	O	#	#
BUKH DV36RME	26.5	36	3,600	3	265	0.136	S1	unlimited	5,000	S	O	O	O	#	O	O	O	#	#
BUKH DV48RME	35.3	48	3,600	3	275	0.175	S1	unlimited	5,000	S	O	O	O	#	O	O	O	#	#
BUKH EPA28	20.6	28	3,600	3	139	0.201	S1	unlimited	5,000	S	O	O	#	#	O	#	O	#	#
BUKH EPA36	26.5	36	3,000	4	168	0.214	S1	unlimited	5,000	S	O	O	#	#	O	#	O	#	#
BUKH EPA48	35.3	48	2,800	4	260	0.185	S1	unlimited	5,000	S	#	#	#	#	O	#	#	#	#
BUKH R175	128.7	175	3,800	4	280	0.625	S3	2 of 12	1,500	#	#	#	#	#	#	#	#	#	#
BUKH R210	154.4	210	3,800	4	280	0.75	S4	1 of 12	1,000	#	#	#	#	#	#	#	#	#	#
BUKH S270	198.5	270	3,800	6	334	0.808	S4	1 of 12	1,000	#	#	#	#	O	#	#	#	#	O
BUKH V8P - 300	220.6	300	3,000	V8	578	0.519	S2	4 of 12	3,000	#	#	#	#	O	#	O	O	O	#
BUKH V8P - 350	257.3	350	3,000	V8	578	0.606	S2	4 of 12	3,000	#	#	#	#	O	#	O	O	O	#
BUKH V8P - 400	294.1	400	3,000	V8	578	0.692	S3	2 of 12	1,500	#	#	#	#	O	#	O	O	O	#
BUKH V8P - 450	330.9	450	3,000	V8	578	0.779	S3	2 of 12	1,500	#	#	#	#	O	#	O	O	O	#
BUKH V8P - 500	367.6	500	3,000	V8	578	0.865	S4	1 of 12	1,000	#	#	#	#	O	#	O	O	O	#
BUKH V8P - 530	389.7	530	3,000	V8	578	0.917	S4	1 of 12	1,000	#	#	#	#	O	#	O	O	O	#
BUKH G300	220.6	300	2,500	6	686	0.437	S1	unlimited	5,000	#	#	#	#	#	#	#	#	#	O
BUKH G350	257.3	350	2,800	6	686	0.510	S3	2 of 12	1,500	#	#	#	#	#	#	#	#	#	O
BUKH H238	175.0	238	1,800	6	1,120	0.213	S1	unlimited	5,000	O	#	#	#	O	#	#	#	#	O
BUKH H310	227.9	310	1,800	6	1,120	0.277	S1	unlimited	5,000	O	#	#	#	O	#	#	#	#	O
BUKH H345	253.7	345	1,800	6	1,120	0.308	S1	unlimited	5,000	O	#	#	#	O	#	#	#	#	O
BUKH H380	297.4	380	1,800	6	1,120	0.339	S1	unlimited	5,000	O	#	#	#	O	#	#	#	#	O
BUKH H410	301.4	410	2,000	6	1,120	0.366	S2	4 of 12	3,000	O	#	#	#	O	#	#	#	#	O
BUKH L500	367.6	500	1,800	6	1,310	0.382	S1	unlimited	5,000	O	#	#	#	O	#	#	#	#	O
BUKH L600	441.2	600	2,000	6	1,310	0.458	S2	4 of 12	3,000	O	#	#	#	O	#	#	#	#	O
BUKH L700	514.7	700	2,300	6	1,310	0.534	S3	2 of 12	1,500	O	#	#	#	O	#	#	#	#	O

BUKH RATING CATEGORIES FOR MARINE ENGINES

S1 - Heavy Duty Commercial

- Uninterrupted and unlimited use at full power

S2 - Medium Duty Commercial

- Full power operation restricted to within 30% of total use period, Continuous maximum output restricted to 4 hours within 12 hours period
 - Cruising speed (rpm) at engine rpm < 90% of rated speed (rpm)
 - Operating less than 3,000 hours per year

S3 - Light Duty Commercial

- Full power operation restricted to within 20% of total use period, Continuous maximum output restricted to 2 hours within 12 hours period
 - Cruising speed (rpm) at engine rpm < 90% of rated speed (rpm)
 - Operating less than 1,500 hours per year

S4 - Special Pleasure Duty / Special light duty commercial

- Full power operation restricted to within 10% of total use period, Continuous maximum output restricted to 1 hour within 12 hours period
 - Cruising speed (rpm) at engine rpm < 90% of rated speed (rpm)
 - Operating less than 1,000 hours per year

S5 - Pleasure Duty

- Full power operation restricted to within 10% of total use period, Continuous maximum output restricted to 0,5 hour within 12 hours period
 - Cruising speed (rpm) at engine rpm < 90% of rated speed (rpm)
 - Operating less than 500 hours per year

Ratings are based on ISO 8665 conditions of 100 kPa (29.612 in Hg) and 25° C (77°F) and 30% relative humidity. Rated power represents the net power available at crankshaft. Fuel consumption has a tolerance of +7% and is based on fuel of 35° API gravity at 16°C (60°F) having an LHV of 42,780 KJ/KG (18,390 BTU/lb) when used at 29°C (85°F) and weighing 838.9 g/litre (7.001 lb/US gal) with LTA when available

Bukh engine model	SOLAS	RCD II	IMO Tier II	EPA TIER III	Dual mapping	Combat mode	Minus 30 deegrees celsius	Minus 40 deegrees celsius	Gearbox horizontal	Gearbox down angle	Gearbox V drive	Water jet adapter	Stern drive	Extra engine data display	E-controls
BUKH DV24RME	S	#	#	#	#	#	C	C	S	#	#	#	#	O	#
BUKH DV29RME	S	#	#	#	#	#	C	C	S	#	#	#	#	O	#
BUKH DV32RME	S	#	#	#	#	#	C	C	S	#	#	#	#	O	#
BUKH DV36RME	S	#	#	#	#	#	C	C	S	#	#	#	#	O	#
BUKH DV48RME	S	#	#	#	#	#	C	C	S	#	#	#	#	O	#
BUKH EPA28	S	C	#	C	#	#	#	#	S	#	#	#	#	S	#
BUKH EPA36	S	C	#	C	#	#	#	#	S	#	#	#	#	S	#
BUKH EPA48	S	C	#	C	#	#	#	#	S	#	#	#	#	S	#
BUKH R175	S	#	#	#	#	#	#	#	O	O	O	O	O	O	O
BUKH R210	S	#	C	C	#	#	C	#	O	O	O	O	O	O	O
BUKH S270	S	#	C	C	#	#	C	#	O	O	O	O	O	O	O
BUKH V8P - 300	O	C	C	#	O	O	#	#	O	O	O	O	O	O	O
BUKH V8P - 350	O	C	C	#	O	O	#	#	O	O	O	O	O	O	O
BUKH V8P - 400	O	C	C	#	O	O	#	#	O	O	O	O	O	O	O
BUKH V8P - 450	O	C	C	#	O	O	#	#	O	O	O	O	O	O	O
BUKH V8P - 500	O	C	C	#	O	O	#	#	O	O	O	O	O	O	O
BUKH V8P - 530	O	C	C	#	O	O	#	#	O	O	O	O	O	O	O
BUKH G300	#	P	P	#	#	#	#	#	O	O	O	O	#	O	O
BUKH G350	#	P	P	#	#	#	#	#	O	O	O	O	#	O	O
BUKH H238	#	#	C	C	#	#	#	#	O	O	O	O	#	O	O
BUKH H310	#	#	C	C	#	#	#	#	O	O	O	O	#	O	O
BUKH H345	#	#	C	C	#	#	#	#	O	O	O	O	#	O	O
BUKH H380	#	#	C	C	#	#	#	#	O	O	O	O	#	O	O
BUKH H410	#	#	C	C	#	#	#	#	O	O	O	O	#	O	O
BUKH L500	#	#	C	#	#	#	#	#	O	O	O	O	#	O	O
BUKH L600	#	#	C	#	#	#	#	#	O	O	O	O	#	O	O
BUKH L700	#	#	C	#	#	#	#	#	O	O	O	O	#	O	O

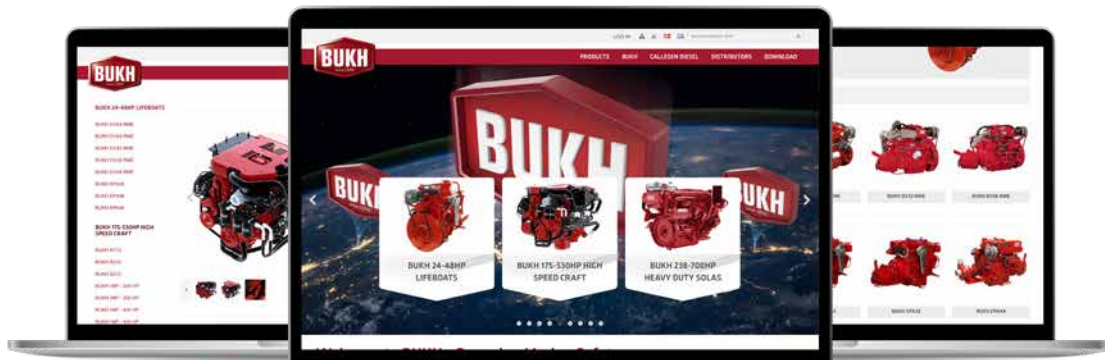
S = Standard

O = Option

C = Certified

= Not available

P= In progress



As BUKH is always endeavouring to improve the engines, specifications mentioned in this brochure are subject to alterations without previous notice.



*Building on more than a century
of experience and dedication to
life and safety at sea.*

Why choose a BUKH engine?

- *High quality*
- *Robust and reliable*
- *SOLAS approved*
- *World wide service network*
- *Compliant with strictest exhaust emission standards*
- *Marine engines - designed for a rough life at sea*
- *125 years of experience with diesel engines*

Certificates and approvals

Det Norske Veritas/GL Offshore SOLAS DNVGL-ST-406

Det Norske Veritas Management System Certificate

Det Norske Veritas EC Type-Examination Certificate

Det Norske Veritas QS Certificate of Assessment - EC

Det Norske Veritas Cold Start Test at Minus 40°C Certificate on DV-Range

Det Norske Veritas Cold Start Test at Minus 30°C Certificate on HighSpeed-Range

Det Norske Veritas Double Start Application

United States Coast Guard Accepted Lifeboat/Rescue Boat Engines meeting US EPA emission requirements



SOLAS approved by Det Norske Veritas
Notified Body: No. 0575

www.bukh.dk

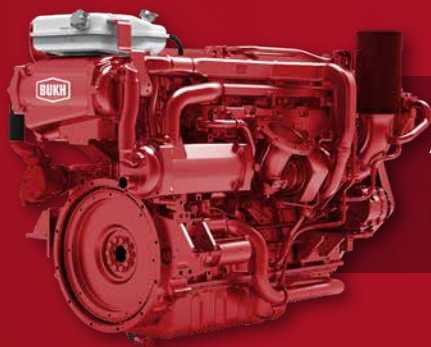
© BUKH 2024. All rights reserved.



24-48 HP
LIFEBOATS



175-530 HP
HIGH-SPEED CRAFTS



238-700 HP
HEAVY DUTY SOLAS

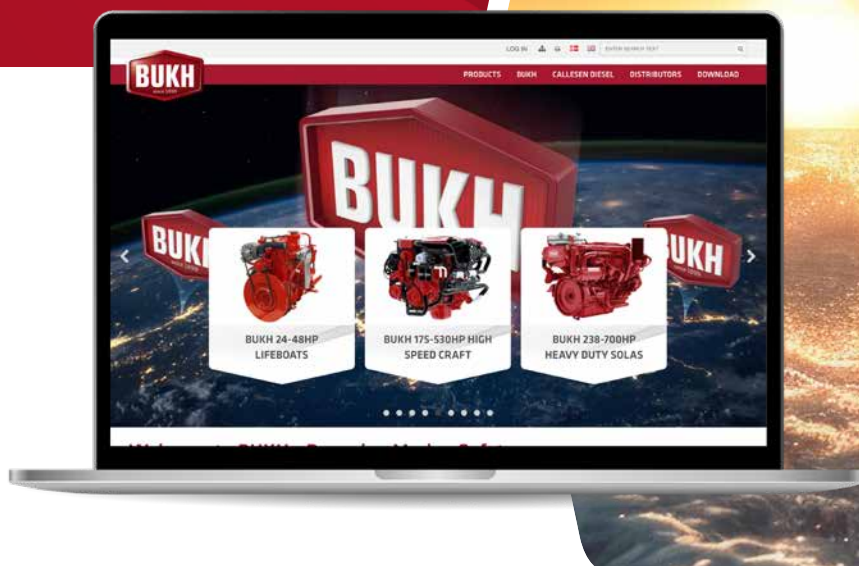
BUKH 009Å5020 - R08

BUKH A/S
6340 Krusaa, Denmark

BUKH ASIA - Sales and Service
Jiangyin City 214400, China

www.bukh.dk

Please find your local distributor on our website.



powering **marine** safety